

## **Attachment B3**

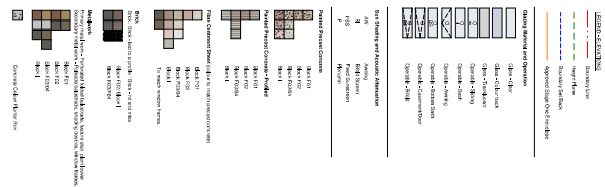
<b>Architectural Plans – Buildings F&amp;I</b>
--











217



Check **✓** definitions and the section you're measuring at any rate, the purpose or effect of the phrase (e.g., "The streets are empty and the sidewalks are empty" means the sidewalks are empty).

Do not **✗** change a word's figure-for-speech role. Any description in **✓** inevitably has to refer to the subject for **✓** definition.

At least one **✓** is required in the band above your answer; for the surface,

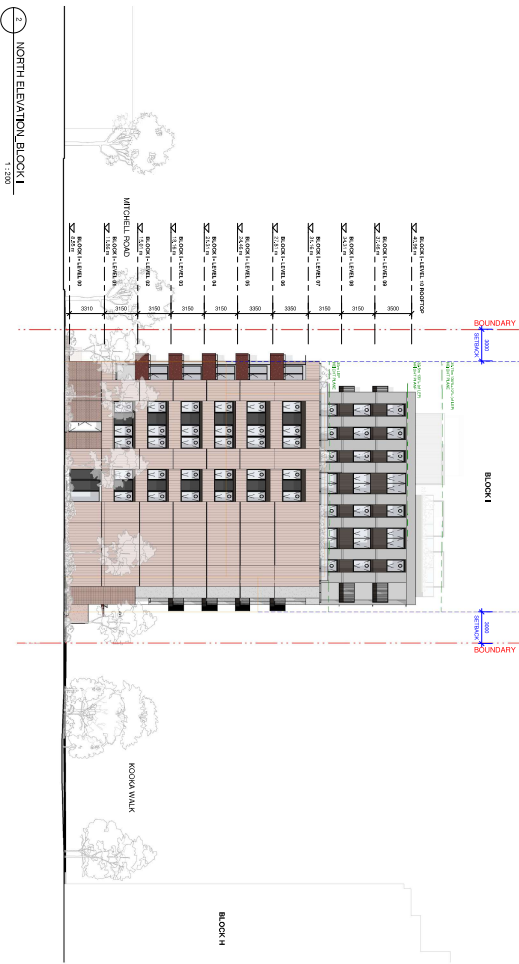
Scale	1 : 200	@ B1
Drawn	Author	Checked
Project no.	S12734	
Series	Design Development	
File Name	20090526 S12734 PM	
Unit	Aurora, Ontario, Canada, Project 8	
Drawing No.	FABR009-09-10 C	
	FABR009-09-10 C (1 of 1)	

**McQuay-Norris** 1 Nicholson Street  
Melbourne, VIC 3000 Australia  
T 03 9564 6300 F 03 9564 6300  
E [info@mcquay-norris.com.au](mailto:info@mcquay-norris.com.au)  
<http://www.mcquay-norris.com.au>

**Blakes Smart Architects Pty Ltd** AEN 68 064 794 366  
80/97 Newmarket Road, Newmarket, Victoria 3176  
T 03 9357 1119 F 03 9357 1119  
E [info@blakesmart.com.au](mailto:info@blakesmart.com.au)  
<http://www.blakesmart.com.au>

**Sydney 3** 3 Brisbane Street  
Sydney, NSW 2010 Australia  
T 02 9354 5100 F 02 9354 5199  
E [info@sydney3.com.au](mailto:info@sydney3.com.au)  
<http://www.sydney3.com.au>

BATESSMART<sup>™</sup>

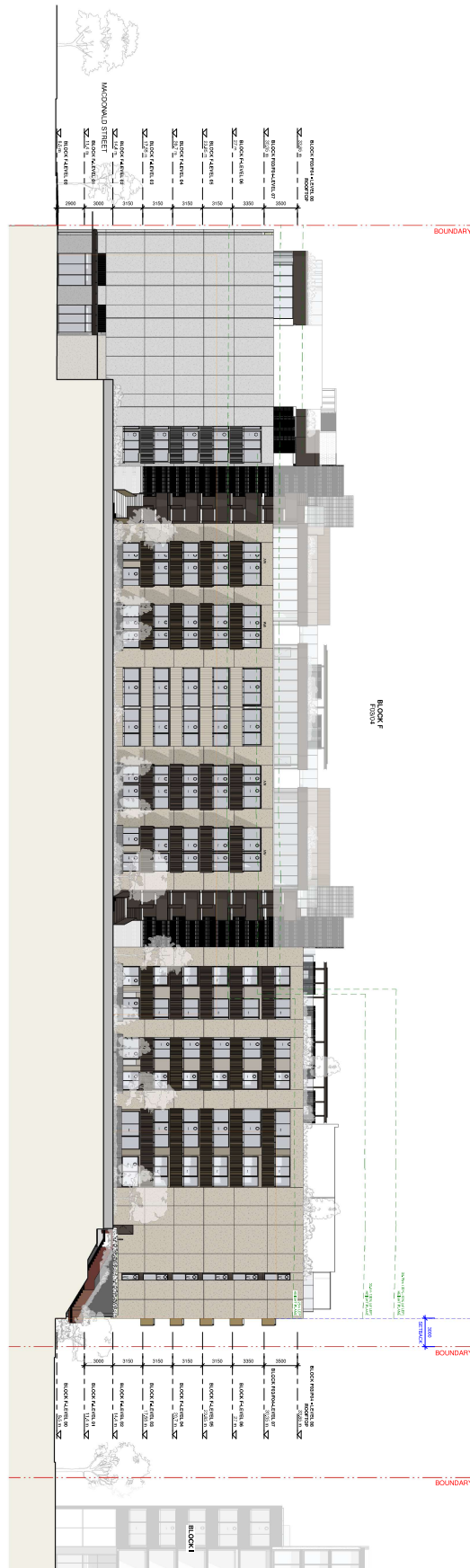




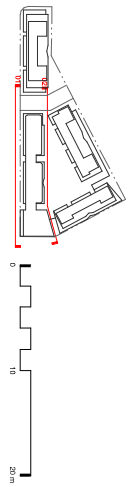




1 EAST ELEVATION, F004  
1:200



2 WEST ELEVATION, F04  
1:200



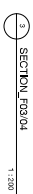
1	2020/21 - General Construction	20
2	2020/21 - General Construction	20
3	2020/21 - General Construction	20
4	2020/21 - General Construction	20
5	2020/21 - General Construction	20
6	2020/21 - General Construction	20
7	2020/21 - General Construction	20
8	2020/21 - General Construction	20
9	2020/21 - General Construction	20
10	2020/21 - General Construction	20

**Ashtore Estate Buildings F&I**  
155 Mitchell Road, Erskineville  
West Elevation  
Block F East Elevation & F004

Scale	1:200	@ 01
Client	Ashtore	Contract
Project No.	57724	
Drawn	Design Development	
Checked	Design Development	
Approved	Design Development	
ARDA-09-21	C	

**BATESSMART**  
BateSMART is a leading provider of architectural and engineering services. We are currently seeking experienced professionals to join our team. For more information, please contact us at [www.batesmart.com.au](http://www.batesmart.com.au).

<b>Legend</b>	<b>Material and Construction</b>	<b>Site Planning and Accessory Structures</b>
1. Solid Line	1. Solid Line	1. Solid Line
2. Dashed Line	2. Dashed Line	2. Dashed Line
3. Dotted Line	3. Dotted Line	3. Dotted Line
4. Dash-dot Line	4. Dash-dot Line	4. Dash-dot Line
5. Long Dash Line	5. Long Dash Line	5. Long Dash Line
6. Short Dash Line	6. Short Dash Line	6. Short Dash Line
7. Dash-dot-dot Line	7. Dash-dot-dot Line	7. Dash-dot-dot Line
8. Dash-dot-dot-dot Line	8. Dash-dot-dot-dot Line	8. Dash-dot-dot-dot Line
9. Dash-dot-dot-dot-dot Line	9. Dash-dot-dot-dot-dot Line	9. Dash-dot-dot-dot-dot Line
10. Dash-dot-dot-dot-dot-dot Line	10. Dash-dot-dot-dot-dot-dot Line	10. Dash-dot-dot-dot-dot-dot Line
11. Dash-dot-dot-dot-dot-dot-dot Line	11. Dash-dot-dot-dot-dot-dot-dot Line	11. Dash-dot-dot-dot-dot-dot-dot Line
12. Dash-dot-dot-dot-dot-dot-dot-dot Line	12. Dash-dot-dot-dot-dot-dot-dot-dot Line	12. Dash-dot-dot-dot-dot-dot-dot-dot Line
13. Dash-dot-dot-dot-dot-dot-dot-dot-dot Line	13. Dash-dot-dot-dot-dot-dot-dot-dot-dot Line	13. Dash-dot-dot-dot-dot-dot-dot-dot-dot Line
14. Dash-dot-dot-dot-dot-dot-dot-dot-dot-dot Line	14. Dash-dot-dot-dot-dot-dot-dot-dot-dot-dot Line	14. Dash-dot-dot-dot-dot-dot-dot-dot-dot-dot Line
15. Dash-dot-dot-dot-dot-dot-dot-dot-dot-dot-dot Line	15. Dash-dot-dot-dot-dot-dot-dot-dot-dot-dot-dot Line	15. Dash-dot-dot-dot-dot-dot-dot-dot-dot-dot-dot Line
16. Dash-dot-dot-dot-dot-dot-dot-dot-dot-dot-dot-dot Line	16. Dash-dot-dot-dot-dot-dot-dot-dot-dot-dot-dot-dot Line	16. Dash-dot-dot-dot-dot-dot-dot-dot-dot-dot-dot-dot Line
17. Dash-dot-dot-dot-dot-dot-dot-dot-dot-dot-dot-dot-dot Line	17. Dash-dot-dot-dot-dot-dot-dot-dot-dot-dot-dot-dot-dot Line	17. Dash-dot-dot-dot-dot-dot-dot-dot-dot-dot-dot-dot-dot Line
18. Dash-dot-dot-dot-dot-dot-dot-dot-dot-dot-dot-dot-dot-dot Line	18. Dash-dot-dot-dot-dot-dot-dot-dot-dot-dot-dot-dot-dot-dot Line	18. Dash-dot-dot-dot-dot-dot-dot-dot-dot-dot-dot-dot-dot-dot Line
19. Dash-dot-dot-dot-dot-dot-dot-dot-dot-dot-dot-dot-dot-dot-dot Line	19. Dash-dot-dot-dot-dot-dot-dot-dot-dot-dot-dot-dot-dot-dot-dot Line	19. Dash-dot-dot-dot-dot-dot-dot-dot-dot-dot-dot-dot-dot-dot-dot Line
20. Dash-dot-dot-dot-dot-dot-dot-dot-dot-dot-dot-dot-dot-dot-dot-dot Line	20. Dash-dot-dot-dot-dot-dot-dot-dot-dot-dot-dot-dot-dot-dot-dot-dot Line	20. Dash-dot-dot-dot-dot-dot-dot-dot-dot-dot-dot-dot-dot-dot-dot-dot Line



Version	Date	Description	Initial	Checked
C	20/03/25	Approved Development Application	NW	NW
B	20/04/25	Approved Development Application	NW	NW
A	13/03/24	Developer Application	HC	HC

Check *After order* and *After install* prior to the measurement of any such. For guidance on details of the procedure, **Figure 1** and **Appendix 1** are available on [www.biorxiv.org](http://www.biorxiv.org) for individuals in data collection.

Scale	1 : 200	@ B1	
Drawn	Author	Checked	Checker
Project no.	S12794		
Status	Design Development		
Rev. Date	2009/02/26 13:45 PM		
File	Autodesk Draw File: 04100101.dwg Page: 5		

**Melbourne:** 1 Nicholson Street  
Melbourne VIC 3000 Australia  
T 03 8664 6000 F 03 8664 6000  
email [info@batesmarf.com.au](mailto:info@batesmarf.com.au)  
<http://www.batesmarf.com.au>

**Sydney:** 43 Brisbane Street  
Surry Hills NSW 2010 Australia  
T 02 8354 5100 F 02 8354 5100  
email [info@batesmarf.com.au](mailto:info@batesmarf.com.au)  
<http://www.batesmarf.com.au>

[illegible]

Drawing no. ARDA-09-22 C Page 2

BATESSMART<sup>TM</sup>[illegible]

	<b>Sun-Stranding and Accusals Attribution</b>
AUC	.69 (.07)
B	88% (.07)
PSS	Fraud Detection
P	Therapy

the F01	the F01
the F02	the F02
the F03-4	the F03-4
the F04	the F04
the F05-6	the F05-6
the F06-7	the F06-7
the F07-8	the F07-8
the F08-9	the F08-9
the F09-10	the F09-10
the F10-11	the F10-11
the F11-12	the F11-12
the F12-13	the F12-13
the F13-14	the F13-14
the F14-15	the F14-15
the F15-16	the F15-16
the F16-17	the F16-17
the F17-18	the F17-18
the F18-19	the F18-19
the F19-20	the F19-20
the F20-21	the F20-21
the F21-22	the F21-22
the F22-23	the F22-23
the F23-24	the F23-24
the F24-25	the F24-25
the F25-26	the F25-26
the F26-27	the F26-27
the F27-28	the F27-28
the F28-29	the F28-29
the F29-30	the F29-30
the F30-31	the F30-31
the F31-32	the F31-32
the F32-33	the F32-33
the F33-34	the F33-34
the F34-35	the F34-35
the F35-36	the F35-36
the F36-37	the F36-37
the F37-38	the F37-38
the F38-39	the F38-39
the F39-40	the F39-40
the F40-41	the F40-41
the F41-42	the F41-42
the F42-43	the F42-43
the F43-44	the F43-44
the F44-45	the F44-45
the F45-46	the F45-46
the F46-47	the F46-47
the F47-48	the F47-48
the F48-49	the F48-49
the F49-50	the F49-50
the F50-51	the F50-51
the F51-52	the F51-52
the F52-53	the F52-53
the F53-54	the F53-54
the F54-55	the F54-55
the F55-56	the F55-56
the F56-57	the F56-57
the F57-58	the F57-58
the F58-59	the F58-59
the F59-60	the F59-60
the F60-61	the F60-61
the F61-62	the F61-62
the F62-63	the F62-63
the F63-64	the F63-64
the F64-65	the F64-65
the F65-66	the F65-66
the F66-67	the F66-67
the F67-68	the F67-68
the F68-69	the F68-69
the F69-70	the F69-70
the F70-71	the F70-71
the F71-72	the F71-72
the F72-73	the F72-73
the F73-74	the F73-74
the F74-75	the F74-75
the F75-76	the F75-76
the F76-77	the F76-77
the F77-78	the F77-78
the F78-79	the F78-79
the F79-80	the F79-80
the F80-81	the F80-81
the F81-82	the F81-82
the F82-83	the F82-83
the F83-84	the F83-84
the F84-85	the F84-85
the F85-86	the F85-86
the F86-87	the F86-87
the F87-88	the F87-88
the F88-89	the F88-89
the F89-90	the F89-90
the F90-91	the F90-91
the F91-92	the F91-92
the F92-93	the F92-93
the F93-94	the F93-94
the F94-95	the F94-95
the F95-96	the F95-96
the F96-97	the F96-97
the F97-98	the F97-98
the F98-99	the F98-99
the F99-100	the F99-100
the F100-101	the F100-101
the F101-102	the F101-102
the F102-103	the F102-103
the F103-104	the F103-104
the F104-105	the F104-105
the F105-106	the F105-106
the F106-107	the F106-107
the F107-108	the F107-108
the F108-109	the F108-109
the F109-110	the F109-110
the F110-111	the F110-111
the F111-112	the F111-112
the F112-113	the F112-113
the F113-114	the F113-114
the F114-115	the F114-115
the F115-116	the F115-116
the F116-117	the F116-117
the F117-118	the F117-118
the F118-119	the F118-119
the F119-120	the F119-120
the F120-121	the F120-121
the F121-122	the F121-122
the F122-123	the F122-123
the F123-124	the F123-124
the F124-125	the F124-125
the F125-126	the F125-126
the F126-127	the F126-127
the F127-128	the F127-128
the F128-129	the F128-129
the F129-130	the F129-130
the F130-131	the F130-131
the F131-132	the F131-132
the F132-133	the F132-133
the F133-134	the F133-134
the F134-135	the F134-135
the F135-136	the F135-136
the F136-137	the F136-137
the F137-138	the F137-138
the F138-139	the F138-139
the F139-140	the F139-140
the F140-141	the F140-141
the F141-142	the F141-142
the F142-143	the F142-143
the F143-144	the F143-144
the F144-145	the F144-145
the F145-146	the F145-146
the F146-147	the F146-147
the F147-148	the F147-148
the F148-149	the F148-149
the F149-150	the F149-150
the F150-151	the F150-151
the F151-152	the F151-152
the F152-153	the F152-153
the F153-154	the F153-154
the F154-155	the F154-155
the F155-156	the F155-156
the F156-157	the F156-157
the F157-158	the F157-158
the F158-159	the F158-159
the F159-160	the F159-160
the F160-161	the F160-161
the F161-162	the F161-162
the F162-163	the F162-163
the F163-164	the F163-164
the F164-165	the F164-165
the F165-166	the F165-166
the F166-167	the F166-167
the F167-168	the F167-168
the F168-169	the F168-169
the F169-170	the F169-170
the F170-171	the F170-171
the F171-172	the F171-172
the F172-173	the F172-173
the F173-174	the F173-174
the F174-175	the F174-175
the F175-176	the F175-176
the F176-177	the F176-177
the F177-178	the F177-178
the F178-179	the F178-179
the F179-180	the F179-180
the F180-181	the F180-181
the F181-182	the F181-182
the F182-183	the F182-183
the F183-184	the F183-184
the F184-185	the F184-185
the F185-186	the F185-186
the F186-187	the F186-187
the F187-188	the F187-188
the F188-189	the F188-189
the F189-190	the F189-190
the F190-191	the F190-191
the F191-192	the F191-192
the F192-193	the F192-193
the F193-194	the F193-194
the F194-195	the F194-195
the F195-196	the F195-196
the F196-197	the F196-197
the F197-198	the F197-198
the F198-199	the F198-199
the F199-200	the F199-200
the F200-201	the F200-201
the F201-202	the F201-202
the F202-203	the F202-203
the F203-204	the F203-204
the F204-205	the F204-205
the F205-206	the F205-206
the F206-207	the F206-207
the F207-208	the F207-208
the F208-209	the F208-209
the F209-210	the F209-210
the F210-211	the F210-211
the F211-212	the F211-212
the F212-213	the F212-213
the F213-214	the F213-214
the F214-215	the F214-215
the F215-216	the F215-216
the F216-217	the F216-217
the F217-218	the F217-218
the F218-219	the F218-219
the F219-220	the F219-220
the F220-221	the F220-221
the F221-222	the F221-222
the F222-223	the F222-223
the F223-224	the F223-224
the F224-225	the F224-225
the F225-226	the F225-226
the F226-227	the F226-227
the F227-228	the F227-228
the F228-229	the F228-229
the F229-230	the F229-230
the F230-231	the F230-231
the F231-232	the F231-232
the F232-233	the F232-233
the F233-234	the F233-234
the F234-235	the F234-235
the F235-236	the F235-236
the F236-237	the F236-237
the F237-238	the F237-238
the F238-239	the F238-239
the F239-240	the F239-240
the F240-241	the F240-241
the F241-242	the F241-242
the F242-243	the F242-243
the F243-244	the F243-244
the F244-245	the F244-245
the F245-246	the F245-246
the F246-247	the F246-247
the F247-248	the F247-248
the F248-249	the F248-249
the F249-250	the F249-250
the F250-251	the F250-251
the F251-252	the F251-252
the F252-253	the F252-253
the F253-254	the F253-254
the F254-255	the F254-255
the F255-256	the F255-256
the F256-257	the F256-257
the F257-258	the F257-258
the F258-259	the F258-259
the F259-260	the F259-260
the F260-261	the F260-261
the F261-262	the F261-262
the F262-263	the F262-263
the F263-264	the F263-264
the F264-265	the F264-265
the F265-266	the F265-266
the F266-267	the F266-267
the F267-268	the F267-268
the F268-269	the F268-269
the F269-270	the F269-270
the F270-271	the F270-271
the F271-272	the F271-272
the F272-273	the F272-273
the F273-274	the F273-274
the F274-275	the F274-275
the F275-276	the F275-276
the F276-277	the F276-277
the F277-278	the F277-278
the F278-279	the F278-279
the F279-280	the F279-280
the F280-281	the F280-281
the F281-282	the F281-282
the F282-283	the F282-283
the F283-284	the F283-284
the F284-285	the F284-285
the F285-286	the F285-286
the F286-287	the F286-287
the F287-288	the F287-288
the F288-289	the F288-289
the F289-290	the F289-290
the F290-291	the F290-291
the F291-292	the F291-292
the F292-293	the F292-293
the F293-294	the F293-294
the F294-295	the F294-295
the F295-296	the F295-296
the F296-297	the F296-297
the F297-298	the F297-298
the F298-299	the F298-299
the F299-300	the F299-300
the F300-301	the F300-301
the F301-302	the F301-302
the F302-303	the F302-303
the F303-304	the F303-304
the F304-305	the F304-305
the F305-306	the F305-306
the F306-307	the F306-307
the F307-308	the F307-308
the F308-309	the F308-309
the F309-310	the F309-310
the F310-311	the F310-311
the F311-312	the F311-312
the F312-313	the F312-313
the F313-314	the F313-314
the F314-315	the F314-315
the F315-316	the F315-316
the F316-317	the F316-317
the F317-318	the F317-318
the F318-319	the F318-319
the F319-320	the F319-320
the F320-321	the F320-321
the F321-322	the F321-322
the F322-323	the F322-323
the F323-324	the F323-324
the F324-325	the F324-325
the F325-326	the F325-326
the F326-327	the F326-327
the F327-328	the F327-328
the F328-329	the F328-329
the F329-330	the F329-330
the F330-331	the F330-331
the F331-332	the F331-332
the F332-333	the F332-333
the F333-334	the F333-334
the F334-335	the F334-335
the F335-336	the F335-336
the F336-337	the F336-337
the F337-338	the F337-338
the F338-339	the F338-339
the F339-340	the F339-340
the F340-341	the F340-341
the F341-342	the F341-342
the F342-343	the F342-343
the F343-344	the F343-344
the F344-345	the F344-345
the F345-346	the F345-346
the F346-347	the F346-347
the F347-348	the F347-348
the F348-349	the F348-349
the F349-350	the F349-350
the F350-351	the F350-351
the F351-352	the F351-352
the F352-353	the F352-353
the F353-354	the F353-354
the F354-355	the F354-355
the F355-356	the F355-356
the F356-357	the F356-357
the F357-358	the F357-358
the F358-359	the F358-359
the F359-360	the F359-360
the F360-361	the F360-361
the F361-362	the F361-362
the F362-363	the F362-363
the F363-364	the F363-364
the F364-365	the F364-365
the F365-366	the F365-366
the F366-367	the F366-367
the F367-368	the F367-368
the F368-369	the F368-369
the F369-370	the F369-370
the F370-371	the F370-371
the F371-372	the F371-372
the F372-373	the F372-373
the F373-374	the F373-374
the F374-375	the F374-375
the F375-376	the F375-376
the F376-377	the F376-377
the F377-378	the F377-378
the F378-379	the F378-379
the F379-380	the F379-380
the F380-381	the F380-381
the F381-382	the F381-382
the F382-383	the F382-383
the F383-384	the F383-384
the F384-385	the F384-385
the F385-386	the F385-386
the F386-387	the F386-387
the F387-388	the F387-388
the F388-389	the F388-389
the F389-390	the F389-390
the F390-391	the F390-391
the F391-392	the F391-392
the F392-393	the F392-393
the F393-394	the F393-394
the F394-395	the F394-395
the F395-396	the F395-396
the F396-397	the F396-397
the F397-398	the F397-398
the F398-399	the F398-399
the F399-400	the F399-400
the F400-401	the F400-401

Back To  
 Back To  
 Back To  
 Back To  
 Back To  
 To visit my pages

Black P001 Black  
Black P003-004

[illegible]

